

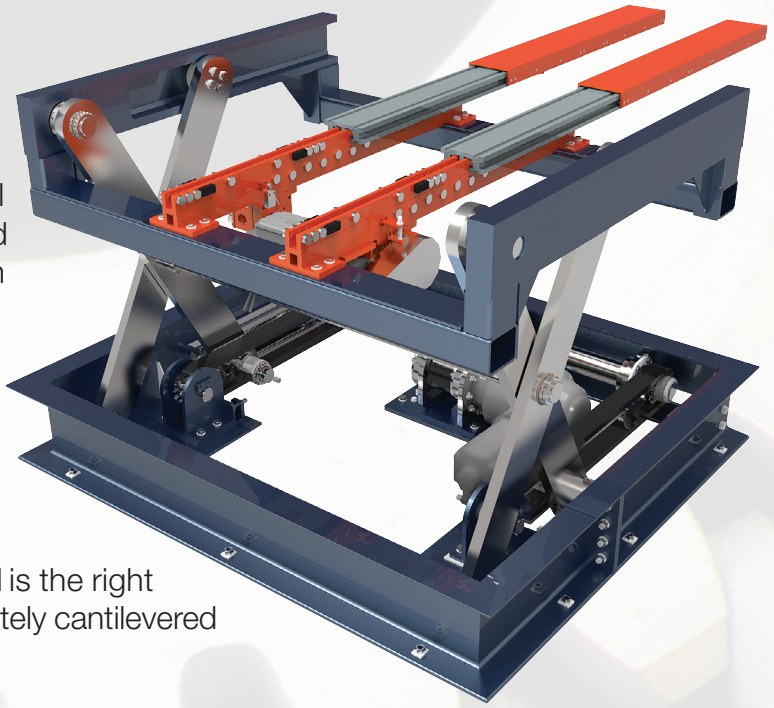


TITAN SCISSOR LIFT

With the TITAN scissor lift, an equipment the handling market has been waiting for a long time for finally becomes available. All of the now-existing pantograph lifts need the centre of gravity of the load to fall within its footprint.

Conversely, this remarkably robust and sturdy equipment has been specifically designed to lift heavy loads whose centre of gravity is located outside the footprint of the device.

With its totally electromechanical drive, TITAN is the right solution to safely lift loads that are completely cantilevered at considerable heights.



SINGLE
DEPTH

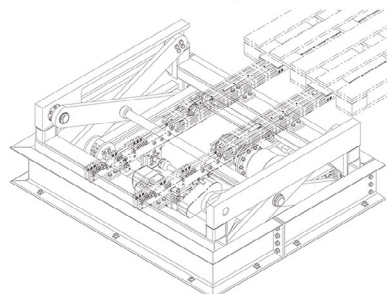
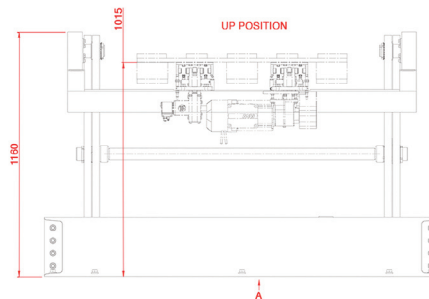
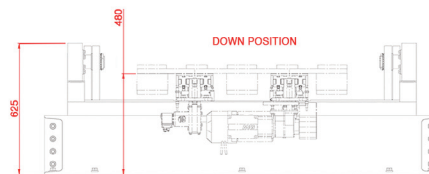
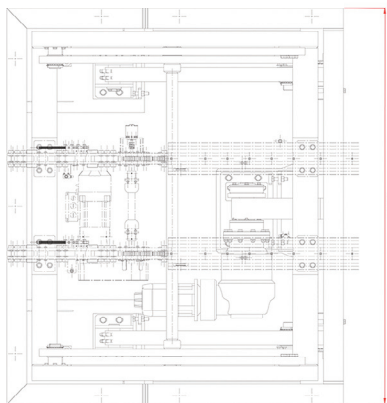
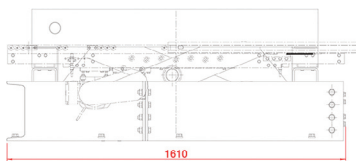
DOUBLE
DEPTH

TRIPLE
DEPTH

VERSION	Q LOAD (KG)	LP MINIMUM LOADING HEIGHT (MM)	T SINGLE STROKE TIME (SEC)	S MAX LIFTING STROKE (MM) *
TITAN X1	2000	380	8	600
TITAN X2	1500	500	12	1000

It perfectly matches the telescopic forks both as dimensions and as flow rates.

* the data in this table are approximate and may vary depending on the model of the used forks and the application of the machine



COMBINED
PRODUCTS

SPECIAL
PRODUCTS