

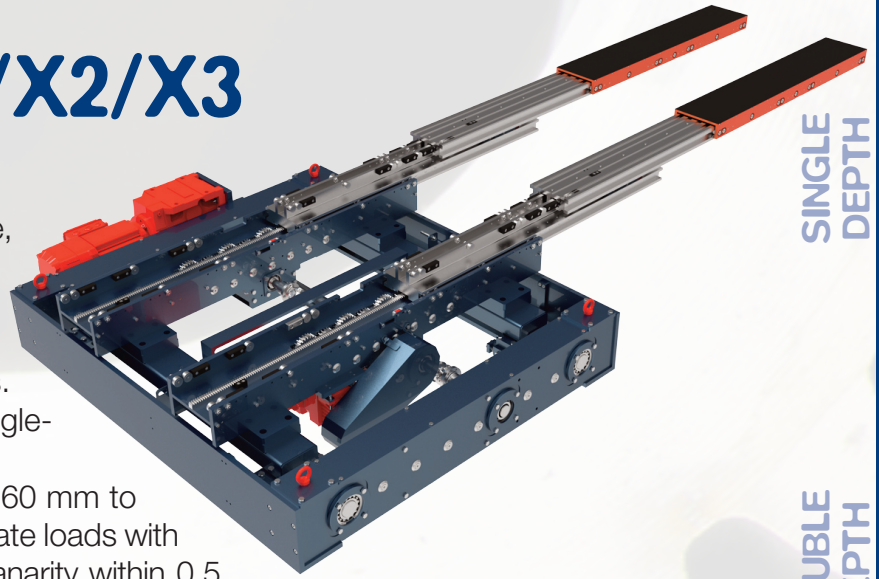


ATLAS X1/X2/X3 GEAR LIFTS

To ensure efficiency, a powerful, accurate, reliable and maintenance-free system is needed. For these reasons, the movement of our Lift is entirely gear-driven - unlike our competitors' ones, relying on chains. The Lifts of our ATLAS series have a single-body chassis.

These powerful and silent systems, with 60 mm to 120 mm of lifting stroke, allows lifting elevate loads with a small deflection and a guaranteed coplanarity within 0.5 mm; something inconceivable in chains-driven lifting devices.

The versions X1 and X3 are operated through eccentric cams and the X2 through gears and racks, with the X3 allowing a tilting movement of +/- 3° approximately, which can be useful in warehouses with gravity conveyors.



SINGLE
DEPTH

DOUBLE
DEPTH

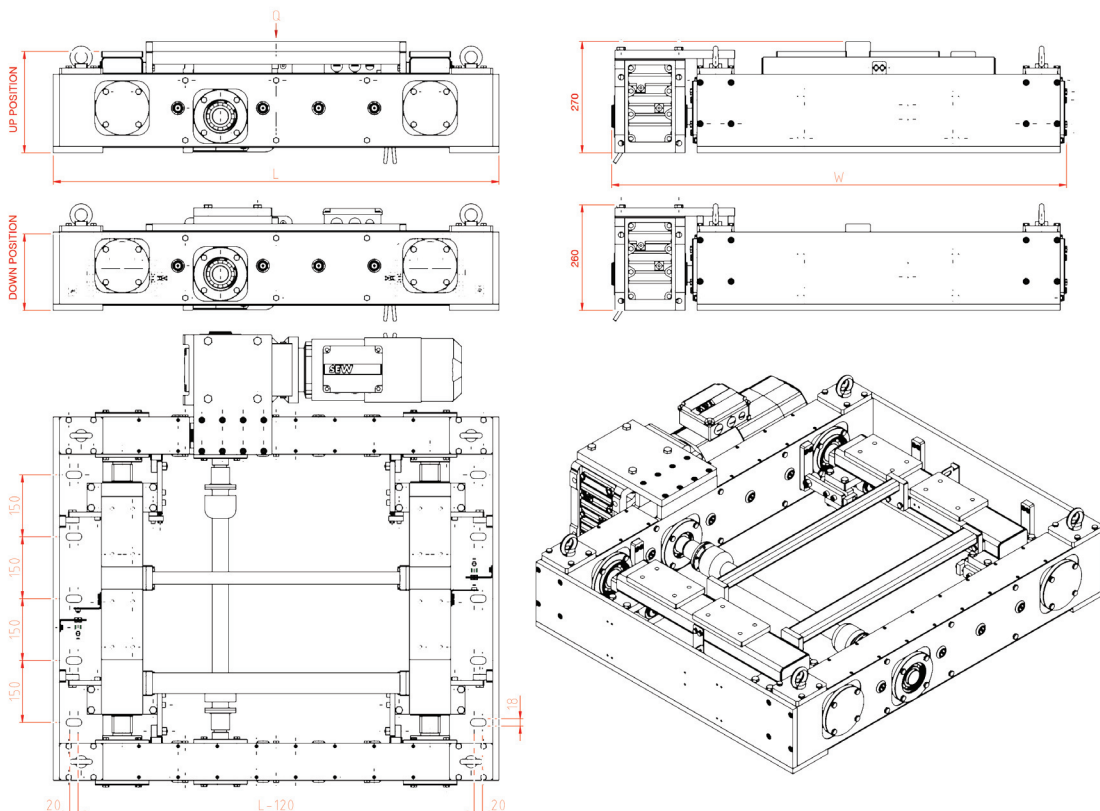
TRIPLE
DEPTH

VERSION	Q LOAD (KG)	LM LIFTING MOVEMENT	T SINGLE STROKE TIME (SEC)
ATLAS X1	2000	60 TO 120 MM	5
ATLAS X2	2000	60 TO 180 MM	8
ATLAS X2	1200	+/-3°	6

Whoever adopts this gear system gains the great advantage of a close-to-zero maintenance on board, whereas the chain-driven devices need constant adjustments.

Hence, ATLAS and GEMINI are winning devices, both from a technical and an economic point of view.

* the data in the table are approximate and may vary depending on the model of the used forks and the application



COMBINED
PRODUCTS

SPECIAL
PRODUCTS